

Great  
Place  
To  
Work®

Certified  
DEC 2025-DEC 2026  
INDIA™



**QUALITY** is our Obsession, Passion and Guarantee



ISO 9001:2015  
Management  
System  
ISO 45001:2018  
ISO 14001:2015

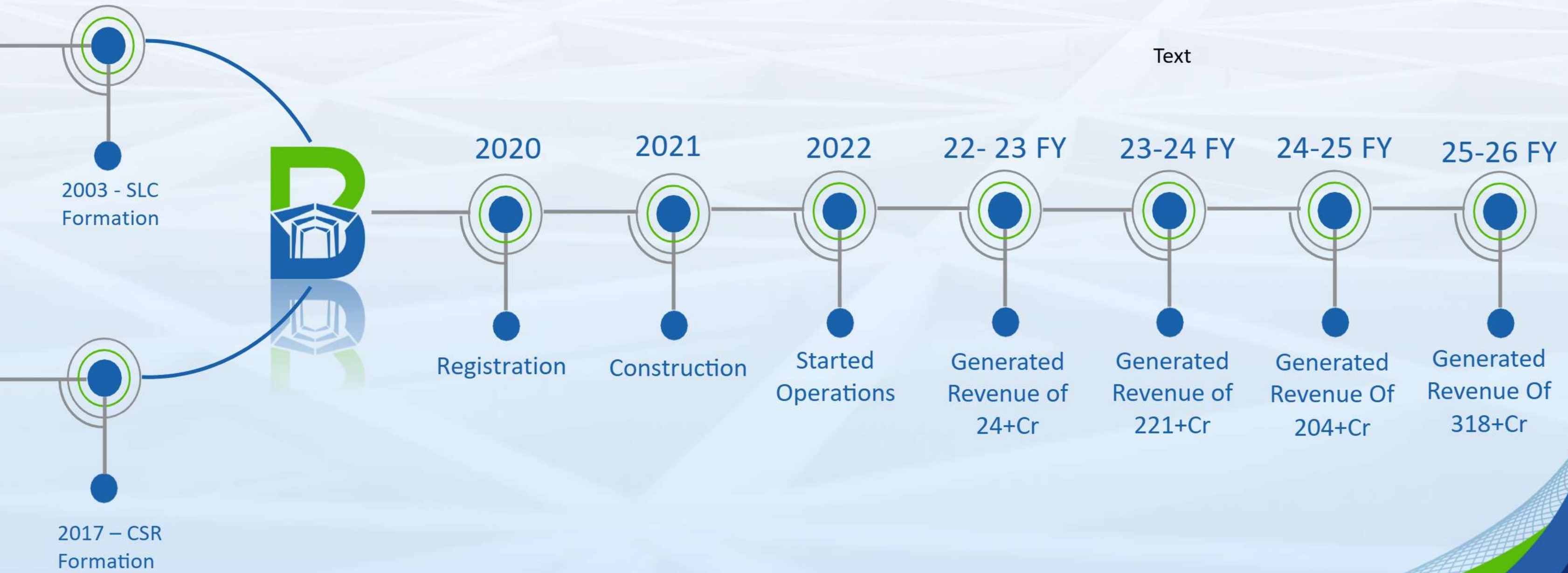


[www.tuv.com](http://www.tuv.com)  
ID 9000031420

# BHEEMAA - HISTORY



At **Bheemaa Infra Solutions Pvt. Ltd. (BISPL)**, we bring strong experience in construction combined with a sharp focus on process orientation. Partnering with us ensures a win-win scenario, contributing to the growing global push for sustainable infrastructure. Below is a brief history of Bheemaa and its origins.



# OUR KEY PEOPLE



**SEETHARAM CH, Founding Partner and MD** of Bheemaa Infra Solutions, has driven the company's rapid rise in the PEB sector, leveraging his **20+ year expertise** in Agile, Lean Six Sigma, and operational excellence from IBM and GE Healthcare. His leadership has transformed Bheemaa's productivity and quality standards, leading to a **500+ Crore turnover** in just Three years. This growth reflects Seetharam's commitment to innovation and sustainable infrastructure development.



**S V V Prasad Rao , Founding Partner and Director** of Bheemaa Infra Solutions Pvt Ltd. He is also founding partner and MD of Sree Lakshmi constructions, has driven the company's growth in the Civil sector, leveraging his **25+ year expertise** in Sri Lakshmi Constructions as founder of the company. SLC worked for projects of **DIVIs, Dr. Reddy's, Biological E, Suven Life Sciences, Gland Pharma, Syngene and ect.**



**DESABABU K**, with **25+ years** in the PEB & Structural Steel industry, plays a key role in our operations as **VP - Operations**. His expertise in managing high-profile projects like **One Zabeel, Burj Khalifa, The Museum of the Future, Sky view Towers, Capital Gate and Dubai Eye** has set benchmarks in quality, client satisfaction, and compliance. His leadership in delivering cost-effective, client-focused solutions continues to drive our company's success in the PEB sector.

# OUR KEY PEOPLE



**MOHAN CHANDRA G, Director – Sales**, is an accomplished commercial leader with **17+ years of experience**, backed by an MBA in Marketing from ISBM. With strong expertise in **strategic planning, market expansion, and client relationship management**, he has consistently driven robust business growth and performance. His leadership in P&L, competitive strategy, and high-performance team development positions him as a key force in elevating the company's market presence and long-term success.



**Gopalakrishnan C, Director – Projects**, brings **25+ years of rich experience** in managing and delivering large-scale, complex engineering and infrastructure developments. He has been part of globally recognized landmark projects including the **One Zabeel Link Bridge, the Museum of the Future, and major Saudi Aramco initiatives**. With deep expertise in planning, execution, quality control, and stakeholder coordination, Gopal is known for driving timely, safe, and high-standard project delivery across international environments.



**ESWAR REDDY** is our **General Manager of Engineering Team**, a seasoned professional with **20 years of experience**, **specializing in TEKLA and AutoCAD for detailed design and drafting**. With a strong background in managing departmental operations, he has played a key role in overseeing and releasing precise shop drawings. Known for his leadership and technical expertise, Eeswar has consistently delivered high-quality, accurate designs, ensuring project efficiency and adherence to standards in various construction and fabrication projects.

# OUR KEY PEOPLE



**VEERABABU T** is Our **Designing Head**, a Structural Engineer with a Master's degree, has substantial experience in the pre-engineered building sector with Shree Pre Fab and Kirby Building Systems. His key projects include the **8200 MT FOXCONN project** and the **3500 MT GMR MRO project**, showcasing his expertise in managing large-scale industrial constructions with technical proficiency and strong project management skills.



**RAVI M**, our **General Manager of Plant Operations**, brings **23+ years of experience** in leading impactful infrastructure developments. His project portfolio includes transformative works such as the **Delhi Metro Rail, Foxconn Buildings @ Bangalore**, Secretariat Buildings in New Delhi, Ranchi Athletic Stadium, and **TCS buildings** in Adibatla. Ravi's leadership and strategic vision drive our success in delivering complex projects with excellence and innovation, making him an asset to our team.



**RAM MOHAN M** is the **General Manager of Erection** with **27+ years of experience**, is a vital team member with a rich background in engineering and construction. His roles, from Site **Engineer in Malaysia to Project and Production Manager in the UAE**, include significant projects like **Capital gate Project and Khalifa Olympic Stadium**. Ram Mohan's leadership and expertise across various roles and regions exemplify his dedication to excellence and our commitment to quality project delivery.

# OUR KEY PEOPLE



**ASWINI DUTT S – QA/QC Manager**, with **15+ years** of experience in mechanical construction across rigs, hydro plants, oil & gas projects, gas power plants, and shutdown operations, is a valuable asset to our team. His extensive field expertise spans fabrication and erection activities, particularly in **projects involving ONGC and Oil India rigs**. Mr. Aswini has strong proficiency in process **pipings, P&IDs, line inspection, and pressure testing, ensuring strict adherence to quality standards and efficient execution** in complex industrial environments.



**PRADEEP A**, our **Manager of Production**, brings **17 years** of rich industry experience to the table. He has played a key role in delivering complex, large-scale projects such as **Uppal Stadium – Hyderabad, Bangalore Metro (BMRCL)**, and the **TCS Campus at Adibatla**. With a deep understanding of structural manufacturing processes and a sharp focus on execution quality, Pradeep consistently drives operational excellence. His leadership and dedication make him a crucial force behind our successful project deliveries.



**Arif Mohiuddin, Manager – HSE**, specializes in safety management and compliance. He is NEBOSH and IOSH certified, and brings international experience across projects in Doha, Qatar, including construction, landscaping, and Ras Laffan oil & gas developments. He is known for proactively **building safe work cultures, driving hazard awareness, risk mitigation, and ensuring continuous improvement in workplace safety standards**.

## OUR KEY PEOPLE



**RAM PRASAD CH** is an experienced **Procurement Manager** with over **20 years** of expertise in managing procurement processes across diverse sectors. His extensive background includes international experience in African countries, where he excelled in **sourcing, vendor management, and supply chain optimization**. Known for his strategic approach, Vara prasad consistently ensures cost-effective and timely procurement solutions.

# OUR ORGANIZATIONAL STRUCTURE



Employees Department Wise	
Engineering	35
Production	150
QA&QC	40
Execution & Safety	85
Manager	30
DGM	5
Director	3
Vice President	1
Executive Director	1
Managing Director	1
<b>Total Employees</b>	<b>351</b>
<b>Total Fabrication Labour</b>	<b>700</b>

Including all together we have total of **25+ Years** of Collective Experience....



**BHEEMAA**  
Infra Solutions Pvt. Ltd.



**Unit-I (Hyderabad)**

**Capacity: 45,000 MT per Annum**

**Workshop Area: 1,20,000 SFT**



## Unit-II (Amaravati)

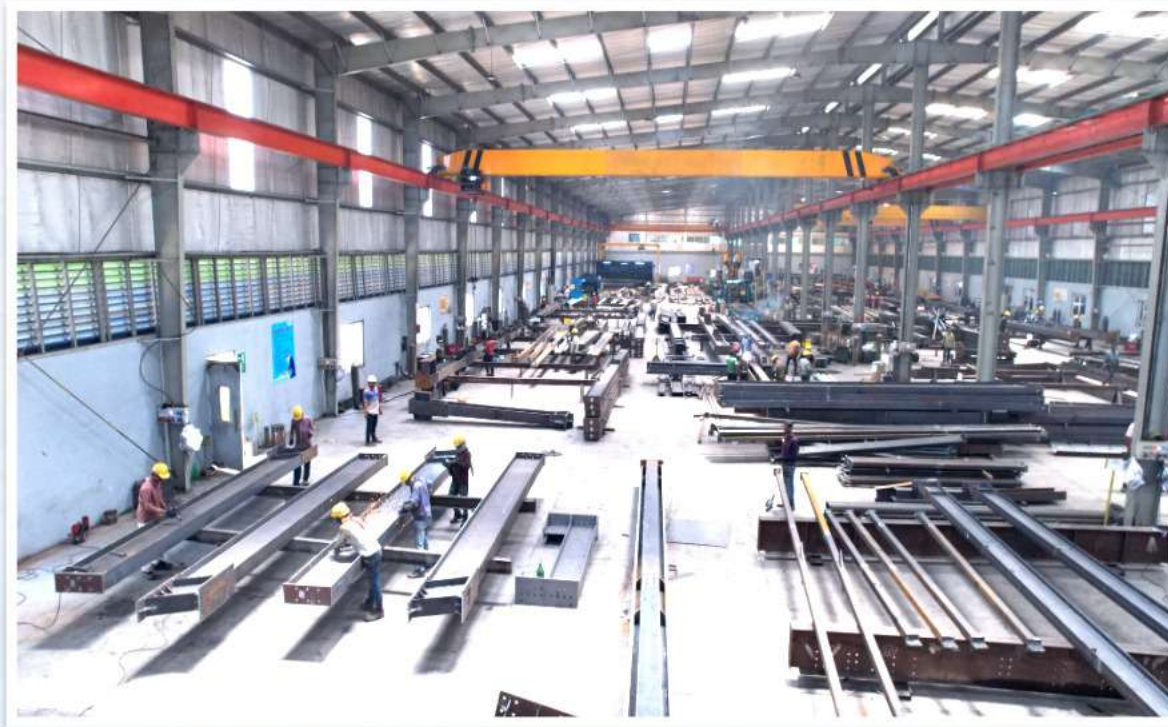
Capacity: 30,000 MT per Annum

Workshop Area: 1,10,000 SFT

# BHEEMAA PREMISES - 1



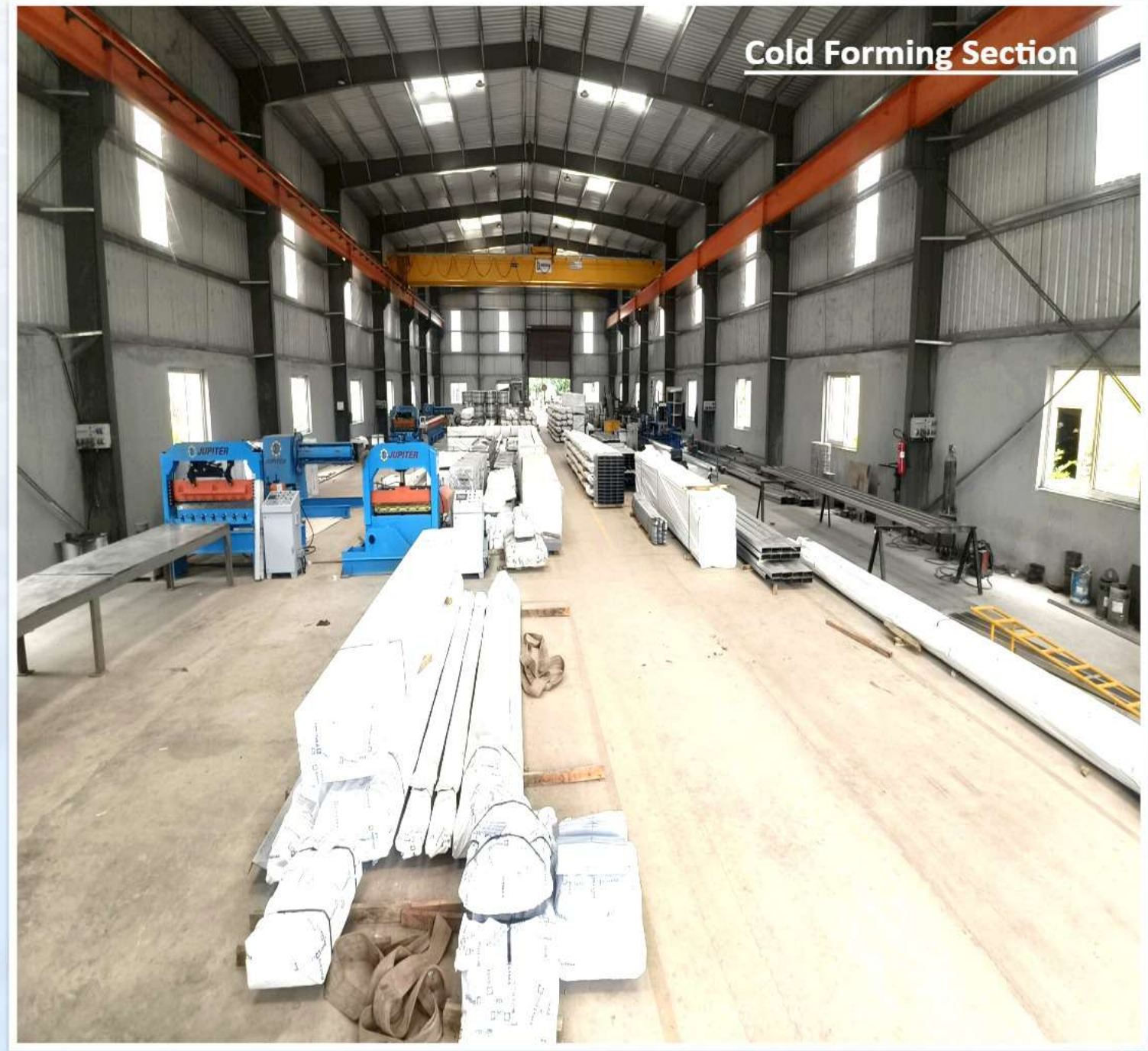
**Unit-I  
(Hyderabad)**  
Primary built-up Section



**Unit-II  
(Amaravati)**  
Primary built-up Section



# BHEEMAA PREMISES - 2



# BHEEMAA PREMISES - 3



# OUR MACHINERY



<u>BEAM LINE SPECIFICATION ABW 1500 BEAM WELDING LINE</u>		
S No	Description	Specification ABW 1500
1	WEB width -Minimum	250mm*
2	WEB width -Maximum	1450mm
3	WEB thickness -Minimum	4.00mm
4	WEB thickness -Maximum	16.00mm
5	FLANGE height -Minimum	150mm
6	FLANGE height -Maximum	600mm
7	FLANGE thickness -Minimum	5.00mm
8	FLANGE thickness -Maximum	25.00mm
9	Web Taper Angle- Maximum	15°(indegrees)**
10	Beam Width overall-Maximum	1500mm
11	Beamlength·Minimum   Maximum	2.5 M to 13.0M

# OUR MACHINERY - 1



**PTW Machine:** It has the capacity of max beam width of **1500mm** with max thickness of **16mm web** also has capacity to weld with **15 degrees ARC** of web taper angle.

## OUR MACHINERY - 2



©BISPL, Amaravati



©BISPL, Amaravati

Laser Cutting Machine: Piercing capacity up to 25 mm, cutting capacity up to 30 mm, powered by 12 kW, with a sheet size capacity of 3 m × 6 m.

## OUR MACHINERY - 3



**Shearing Machine**: With shearing capacity up to **16 mm** thick plate. For the length of **6700 mm**.

## OUR MACHINERY - 4



© BISPL, Hyderabad



© BISPL, Hyderabad

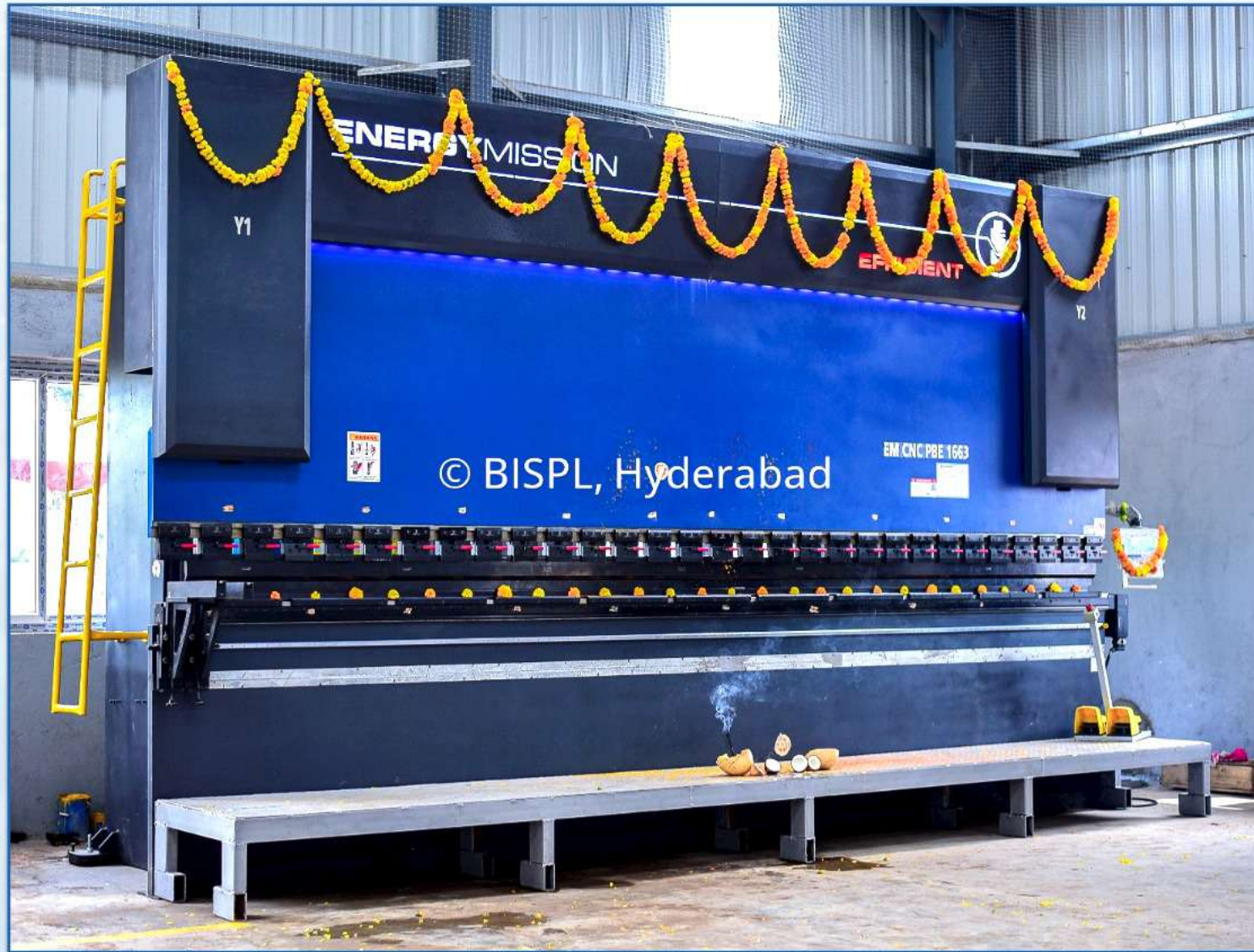
XY - CnC: CNC Shearing Machine capable of cutting sheets up to 100mm thick and supporting lengths of up to 12,000mm.



©BISPL, Amaravati

XY - CnC: CNC Shearing Machine capable of cutting sheets up to 110mm thick and supporting lengths of up to 25,000mm.

## OUR MACHINERY - 5



**Press Brake:** Our Press brake has the bending range of **0.5 – 3 mm** thick sheet up to the length of **6300 mm**.



**Radial Drilling Machine:** Radial Drilling Machines with Boring capacity Up to **85mm**.

## OUR MACHINERY - 6



**Sheeting Machine:** Trapezoidal roll forming consisting of 6- rib profile with thickness varying from 0.4 mm to 0.8 mm of thick.



**C&Z Purlin Machine:** It has the capacity of 80 -300 mm and 120– 300 mm of C&Z purlin thickness of ranging from 1.5 – 3 mm thickness.

## OUR MACHINERY - 7



**Standing Seaming Machine:** It has the capacity of 300 mpa, supports coils with widths of 610/730 mm and handles material with a thickness of 0.5 mm.



**Fully Automatic Shot Blasting - Machine:** with an opening of 2.2 meters in height and 1.2 meters in width.

## OUR MACHINERY - 8



**CNC Punching Machine:** Delivers 1000 kN punching and 800 kN marking force, ideal for 5–25 mm thick plates. Equipped with 12-character marking for precise, high-force metal processing.

## OUR MACHINERY - 9



**Hydraulic Press Machine:** Hydraulic Press Machine of **150 MT** capacity for bending purpose.



**Air Compressor:** Air compressors with collective capacity of **600 CFM** at delivery of **8 PSI**.

## OUR MACHINERY - 10



**Deck Sheeting Machine**: deck sheeting machine suitable for steel thickness 0.8–1.2 mm, producing deck sheets up to 9 m length with 1 m effective width.





## OUR QA PROCESS - 2

Bheemaa employs a rigorous approach to welding quality inspection by using advanced tools like **Vernier Calipers**, **Dye Penetrant Testing (DPT)**, and **Ultrasound Flaw Detectors**. **Vernier Calipers** provide precise measurements to ensure weld dimensions meet specifications. **DPT** is utilized for detecting surface flaws, such as cracks or porosity, through visible dye application. **Ultrasound Flaw Detectors** go deeper, identifying any internal imperfections that could weaken the weld. This comprehensive testing protocol upholds Bheemaa's high standards of structural integrity and durability in PEB construction.



## OUR QA PROCESS - 3

Bheemaa's QC team performs daily random inspections of the blasting profile to ensure it meets project specifications, maintaining **relative humidity below 80%** for optimal paint adhesion. Tools like **Comparator, Needle Gauge, Press-O-Film, and Humidity & Temperature Meters** are used to validate surface conditions. For each paint coat, **Wet Film Thickness (WFT)** is measured and recorded using a **WFT Gauge**, and a visual inspection is conducted to check **Dry Film Thickness (DFT)**. If DFT falls short, the Paint Supervisor is promptly notified to apply an additional coat, ensuring consistent coverage and protection.





# PEB STRUCTURAL MEMBERS

At **Bheemaa**, we engineer Pre-Engineered Buildings (PEBs) with precision-crafted structural members like columns and beams to ensure unmatched strength and stability. **Columns carry vertical loads, while beams distribute loads horizontally across the frame.**





# OUR HSE PROCESS - 1

Bheemaa conducts regular **Induction Training, Toolbox Meetings, and Job-Specific Trainings** to ensure all employees understand safety protocols, project requirements, and role-specific responsibilities. These sessions are essential for enhancing team awareness, reducing risks, and promoting a culture of safety and efficiency on-site.



## OUR HSE PROCESS - 2



Safety Harness Periodic Inspections are conducted diligently at Bheemaa, using dedicated color coding to ensure compliance and quick identification of inspection status. This practice enhances safety and accountability for all team members on-site





## OUR HSE PROCESS - 3

Bheemaa conducts periodic maintenance on all tools and equipment to ensure optimal performance and safety. After each maintenance check, tools are labeled to indicate their inspection status and the next scheduled maintenance date. This organized approach reduces equipment downtime and promotes a safer work environment.



# OUR PROJECTS



## Our Recent Projects

Company Name	Tonnage (MT)
Foxconn	9,065
Campa Cola	6,199
Gold Plus	5,300
Sathlokhar	3,000
GMR	2,800
Premier Energies	2,000
Microsoft	1,600
Coca-Cola	1,200
Oil India	1,200
OLA	1,100
Heritage	900
Tata Projects	850
Adani	650
Amara raja -CF & MF	520
Amara raja -Cheyyar	425
Toshiba	400
Asian Paints	260
KIA Automotive	225

## Our Ongoing Projects

Company Name	Tonnage (MT)
GAD Tower - Amaravathi	21,000
Toshiba (Unit - 9)	2,600
Amara Raja Giga Plant (Zone-3)	2,500
Amara Raja Giga Plant (Zone-4)	2,500
Shimizu Corporation	1,500
Premier Energies (BESS)	1,230
Sumadhura Logistics Park	900
Skyroot Aerospace	800
Divi's Laboratories	600

# OUR ESTEEMED CLIENTS



# OUR COMPLETED PROJECTS



Project	Foxconn
Qty	9065 Tons

Width : 85 m  
Length : 162 m  
Height : 22.3 m  
No. Of Floors: G+3  
Total built-up area :  
5L+ Sq.ft.

### Description:

Bheemaa Infra Solutions is proud to be part of the development of **Foxconn's major electronics manufacturing hub** near Bengaluru. The facility will support the production of smartphones, electronic components, and EV parts.



# OUR COMPLETED PROJECTS



Project	Toshiba
Qty	410 Tons

Width : 42 m

Length : 125 m

Height : 14 m

Total built-up area :  
56,510 Sq.ft.

## Description:

**Bheemaa Infra** proudly delivered Toshiba's first CRGO Core Processing Centre in India – a milestone in the nation's transformer manufacturing journey. A symbol of engineering excellence, delivered on time with world-class quality.



# OUR COMPLETED PROJECTS



Project	KMV – Cycle Track
Qty	2500 Tons

Width : 6 m

Length : 23,000 m

Height : 4.5 m

Total built-up area :  
14,85,419 sq. ft.

## Description:

As part of Hyderabad's push for sustainable infrastructure, Bheemaa Infra Solutions played a key role in developing **India's first solar-roofed cycling track on the Outer Ring Road** — combining green energy with smart urban mobility.



© BISPL, Hyderabad



© BISPL, Hyderabad



© BISPL, Hyderabad



© BISPL, Hyderabad

# OUR COMPLETED PROJECTS



Project	Gold Plus
Qty	5300 Tons

Width : 132 m

Length : 500 m

Height : 15 m (Eave)

Total built-up area :

8.5L+ sq. ft.

## Description:

Pushing the boundaries of glass manufacturing, Bheemaa Infra Solutions has successfully enabled the setup of India's first float glass line for 15–19 mm thickness at **Gold Plus Glass Industry's 200-acre greenfield facility in Belagavi** — delivering integrated solar and float glass lines for high-capacity production.



# OUR COMPLETED PROJECTS



Project	GMR - Safran
Qty	2500 Tons

Width : 158 m

Length : 160 m

Height : 15 m

Total built-up area :  
2,88,338 sq. ft.

## Description:

Bheemaa Infra Solutions successfully delivered the GMR-Safran MRO facility for LEAP engines at the GMR Hyderabad Aerospace SEZ. Spread across 23.5 acres with 2,88,338 sq. ft. of built-up space, the facility enhances aviation maintenance capabilities and marks a significant step in positioning Hyderabad as a global aerospace hub.



# OUR COMPLETED PROJECTS



Project	AISATS BLR Logistics Park
Qty	873 Tons

Width : 152 m

Length : 180 m

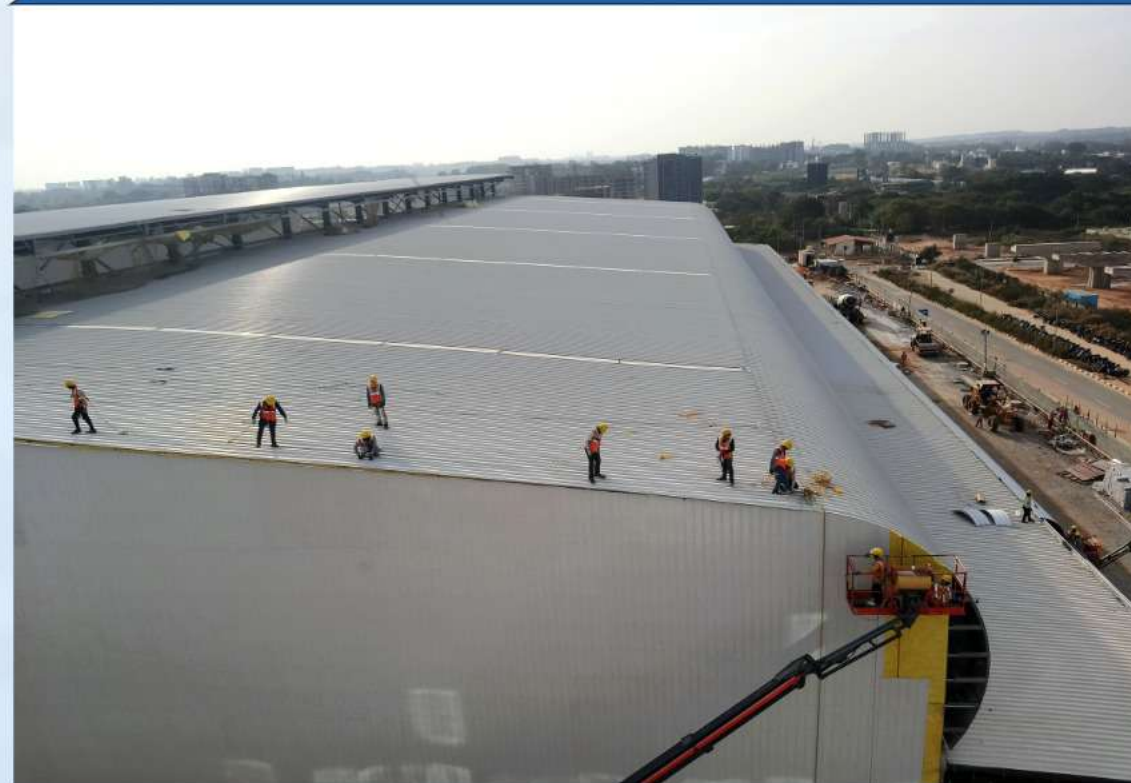
Height : 13 m (Eave)

Total built-up area :  
1,99,605 sq. ft.

## Description:

Bheemaa Infra played a key role in shaping the AISATS BLR Logistics Park at Bengaluru Airport — strengthening cargo operations and streamlining EXIM connectivity.

This facility enhances freight efficiency and supports seamless movement across key trade corridors.



# OUR COMPLETED PROJECTS



Project	Premier Energies
Qty	2100 Tons

Width : 118 m

Length : 420 m

Height : 12.6 m

Total built-up area :  
5,10,400 sq. ft.

## Description:

Bheemaa Infra takes pride in building the **RM & FG Warehouse Facility for Premier Energies** at Seetharampur — spanning 5,10,400 sq. ft. of advanced industrial space. A project **powering India's clean energy vision.**



# OUR COMPLETED PROJECTS



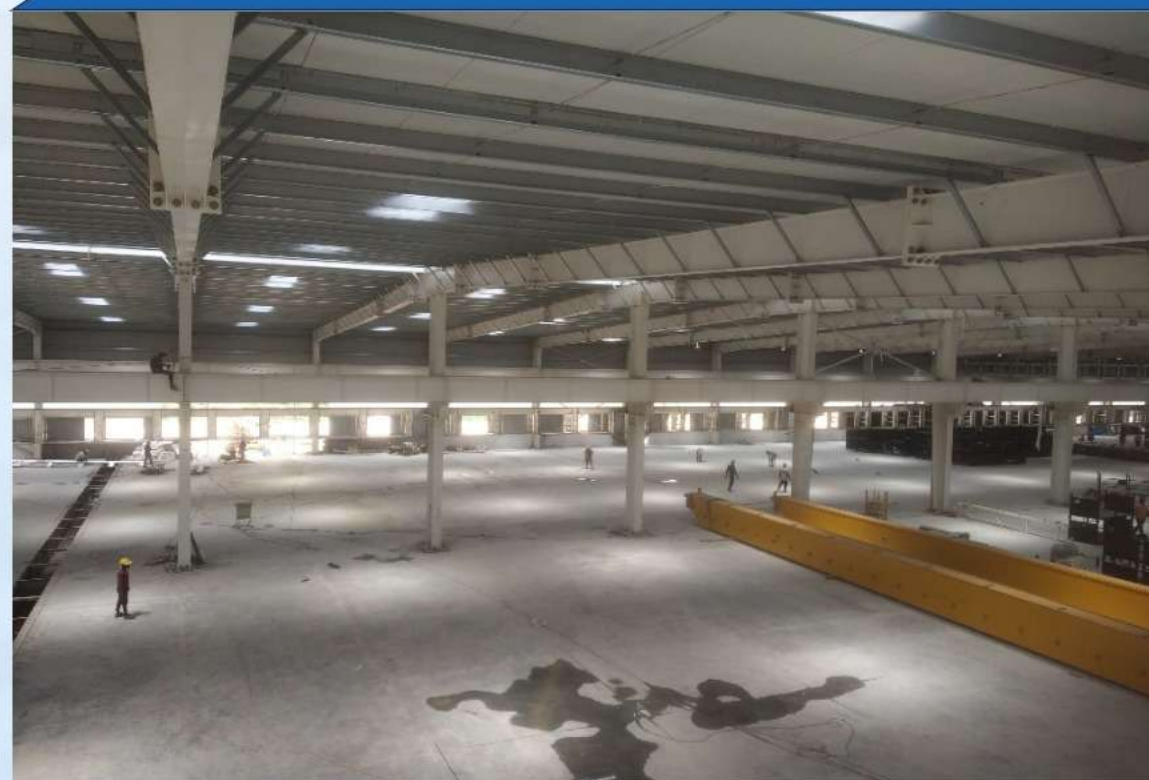
Project	Amara Raja CF-MF
Qty	520 Tons

Width : 60 m

Length : 250 m

Height : 10.5 m (Eave)

Total built-up area :  
1,57,583 sq. ft.



## Description:

Bheema Infra delivered a 1,57,583 sq. ft. industrial facility for Amara Raja Batteries, a technology leader and one of India's largest manufacturers of automotive and industrial batteries. This project contributes to a company trusted by leading OEMs and exporting globally.

# OUR COMPLETED PROJECTS



Project	Heritage
Qty	900 Tons

Width : 63 m

Length : 98.5 m

Height : 18.2 m

Total built-up area :  
64,852 sq. ft.

## Description:

Bheemaa Infra has successfully delivered the Heritage Foods Ice Cream Plant with a 61-meter clear span — setting a benchmark in modern food processing infrastructure. Engineered for efficiency, hygiene, and high-volume operations, the project reflects precision and performance at scale.



# OUR COMPLETED PROJECTS



Project	Fermac BIO
Qty	220 Tons

Width : 30 m  
Length : 50 m  
Height : 13.5 m (Eave)  
No. of floors : 2  
Total built-up area :  
8912 Sq. ft.



## Description:

Bheemaa delivered advanced fermentation blocks for Fermac BIO, enabling protein and enzyme production vital to biopharma manufacturing. These facilities support outputs like insulin, HGH, immunosuppressants, and key ingredients for antibiotics and immunotherapies.

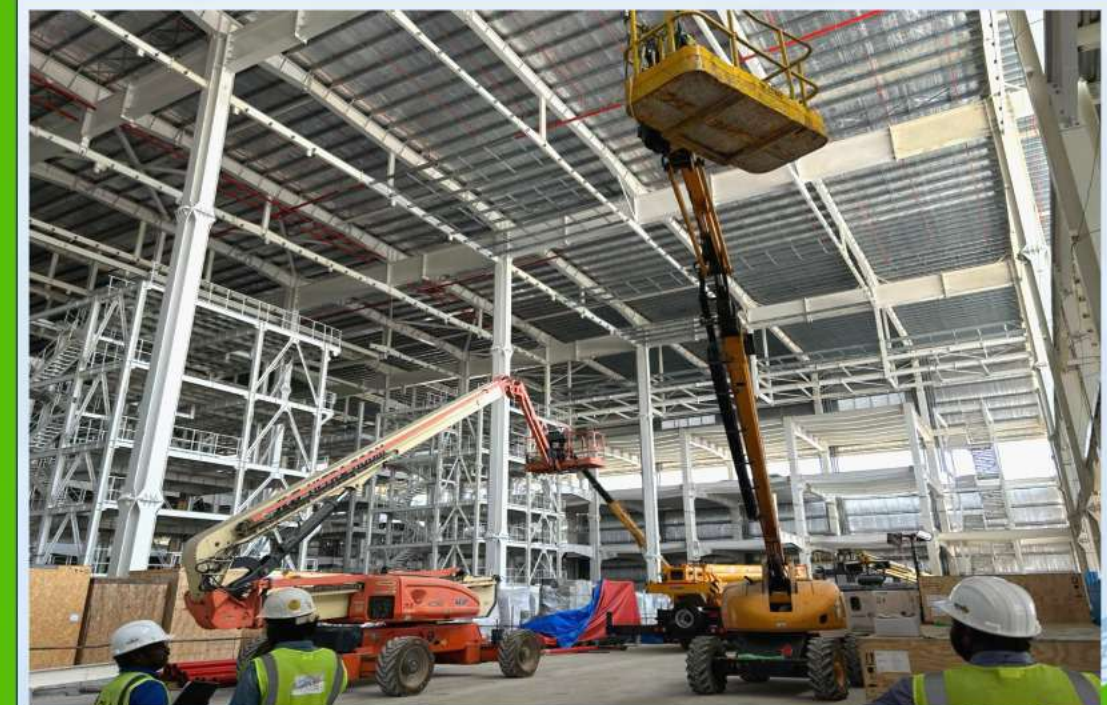
# OUR COMPLETED PROJECTS



Project	OLA Electric
Qty	1100 Tons

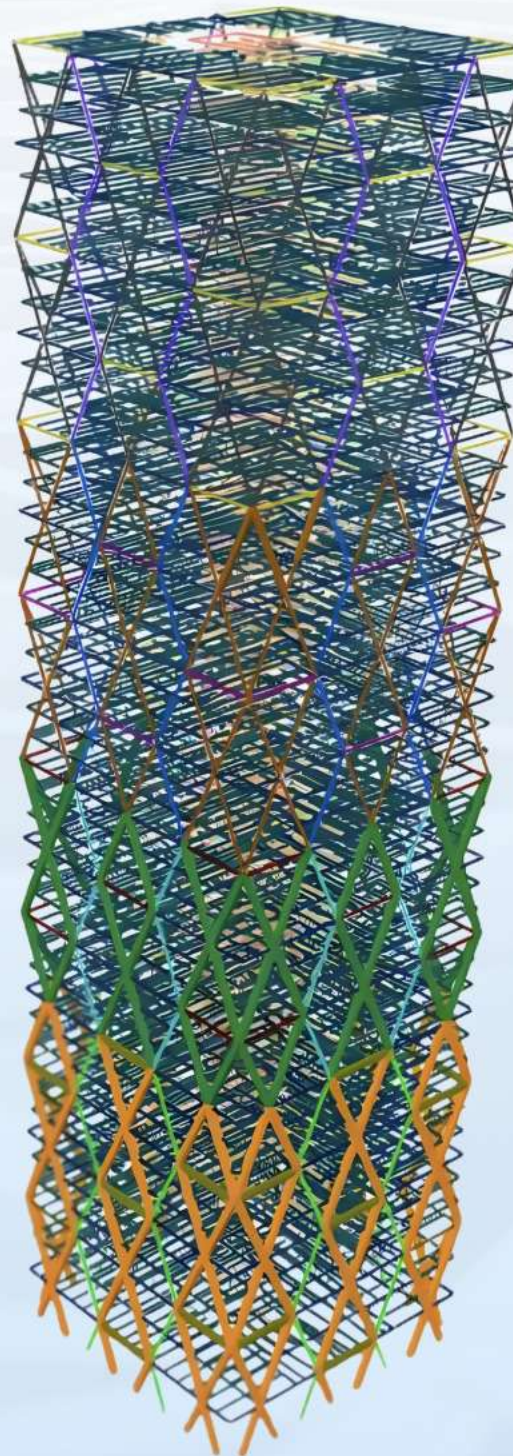
## Description:

Ola Electric's gigafactory in Krishnagiri, executed by Bheemaa Infra Solutions, is poised to be one of the world's largest EV facilities — starting at 5 GWh and expanding to 100 GWh. **Bheemaa Infra proudly contributes to shaping India's EV future with world-class infrastructure delivery.**



# OUR ONGOING PROJECTS

Project	GAD Tower - Amaravati
Qty	21,000 Tons
Width : 47 m Length : 47 m Height : 218 m No. of floors : G + 49 Total built-up area : 11,28,219 sq. ft.	
<b>Description:</b> Bheemaa Infra is delivering the diagrid structure and connection design for the iconic Amaravati GAD Tower, India's first diagrid building rising beyond 100 metres.	



# RECOGNITION OF EXCELLENCE



Bheemaa Infra Solutions has showcased exceptional excellence across multiple Heritage projects—including the Extension of the Main Production Block, Construction of the UHT Block, and the Ice Plant earning heartfelt appreciation from Nara Bhuvaneshwari Garu and Nara Brahmani Garu. Successfully handling multiple projects for a single client stands as a testament to Bheemaa's expertise in PEBs, unwavering commitment to quality, and superior execution.





# RECOGNITION OF EXCELLENCE

Bheemaa Infra Solutions successfully delivered India's first CRGO Core Processing Centre and Surge Arrester Production Line at Rudraram, Telangana, on time and with uncompromising quality. The facility, constructed for Toshiba Transmission & Distribution Systems (India) Pvt. Ltd., features 12,000 MT/year CRGO steel processing, 80,000 units/year surge arrester production, and an EHV Transformer capacity rising from 30,000 to 42,000 MVA. This landmark project highlights Bheemaa's PEB expertise, precision execution, and contribution to India's first-of-its-kind electrical manufacturing infrastructure.

# TOSHIBA



# CLIENT APPRECIATIONS & SAFETY RECOGNITIONS



**CTCI**

### Certificate of Appreciation

This certificate is proudly presented to

**BHEEMAA** Infra Solutions Pvt. Ltd. *M/s. Bheemaa Infra Solutions Pvt. Ltd.*

In recognition of the successful and professional execution of the various PEB Works for the Foxconn Elephant Project, Bangalore, INDIA.

The Scope of the project Completed with Exceptional Quality Technical expertise and strict adherence to timelines and safety standards.

We sincerely appreciate your outstanding performance.

**Sathish Kumar .K**  
QA/QC Manager  
(Cinda Engg. & Const.Pvt.Ltd.)

**Mukesh Kumar**  
Deputy Project Site Manager  
(Cinda Engg. & Const.Pvt.Ltd.)

MUKESH KUMAR  
DY. PROJECT SITE MANAGER  
CINDA, FOXCONN (ELEPHANT) PROJECT,  
BANGALORE, KARNATAKA

**CTCI**

### Certificate of Appreciation

The Management of Cinda Engineering and Construction Pvt.Ltd. Foxconn Elephant Project, Bangalore , India. Appreciates

**BHEEMAA** Infra Solutions Pvt.Ltd.

**M/s. Bheemaa Infra Solutions Pvt Ltd.**

For achieving **0.5 (Million)** safe Man-Hours without Lost Time Incident on June 2025

**Bidhu Bhusan Panda**  
Site HSE Manager  
(Cinda Engg. & Const. Pvt.Ltd.)

**Chien Chu Su**  
Project Site Manager  
(Cinda Engg. & Const. Pvt.Ltd.)

**TOSHIBA**

### CERTIFICATE OF APPRECIATION

This certificate is proudly presented to

*M/s. Bheemaa Infra Solutions Pvt. Ltd.*

in recognition of the successful completion of the CRGO PROCESSING CENTRE (Unit - 10) for Toshiba Transmission & Distribution Systems (India) Pvt. Ltd. at Hyderabad, Telangana.

Your commitment to **quality, safety, and timely execution** has contributed greatly to the success of this project.

We extend our sincere appreciation for your professionalism and excellence in project delivery.

**Authorized Signatory (TTDI)**

**TOSHIBA**

### SAFETY CERTIFICATE

The Management of Toshiba appreciates

*M/s. Bheemaa Infra Solutions Pvt. Ltd.*

for maintaining **Zero Accidents / Zero Incidents** during the execution of the CRGO Processing Centre (Unit-10) Project at Toshiba Transmission & Distribution Systems (India) Pvt. Ltd., Hyderabad, Telangana.

Your dedication to maintaining the highest standards of safety and collaboration has been pivotal in achieving a secure and efficient workplace.

**Authorized Signatory (TTDI)**

# OUR ISO CERTIFICATIONS



## Certificate

Standard **ISO 9001:2015**  
Certificate Registr. No. **01 100 2538057**


Certificate Holder:   
**Bheemaa Infra Solutions Private Limited** Sy  
No.323/P, Konapur Grama Panchayat,  
Sadasivpet Mandal, Sangareddy,  
Hyderabad – 502295,  
Telangana, India.

Scope: Design, Detailing, Manufacturing, and Installation of  
Pre-Engineered Structures

Proof has been furnished by means of an audit that the  
requirements of ISO 9001:2015 are met.

Validity: The certificate is valid from 2025-05-16 until 2028-05-15.  
First certification 2025

2025-05-16

  
TÜV Rheinland Cert GmbH  
Am Grauen Stein · 51105 Köln

www.tuv.com



## Certificate

Standard **ISO 14001:2015**  
Certificate Registr. No. **01 104 2538057**

Certificate Holder:   
**Bheemaa Infra Solutions Private Limited**  
Sy No.323/P, Konapur Grama Panchayat,  
Sadasivpet Mandal, Sangareddy,  
Hyderabad – 502295,  
Telangana, India

Scope: Design, Detailing, Manufacturing, and Installation of  
Pre-Engineered Structures

Proof has been furnished by means of an audit that the  
requirements of ISO 14001:2015 are met.

Validity: The certificate is valid from 2025-05-16 until 2028-05-15.  
First certification 2025

2025-05-16

  
TÜV Rheinland Cert GmbH  
Am Grauen Stein · 51105 Köln

www.tuv.com



## Certificate

Standard **ISO 45001:2018**  
Certificate Registr. No. **01 213 2538057**


Certificate Holder:   
**Bheemaa Infra Solutions Private Limited** Sy  
No.323/P, Konapur Grama Panchayat,  
Sadasivpet Mandal, Sangareddy,  
Hyderabad – 502295,  
Telangana, India.

Scope: Design, Detailing, Manufacturing, and Installation of  
Pre-Engineered Structures

Proof has been furnished by means of an audit that the  
requirements of ISO 45001:2018 are met.

Validity: The certificate is valid from 2025-05-16 until 2028-05-15.  
First certification 2025

2025-05-16

  
TÜV Rheinland Cert GmbH  
Am Grauen Stein · 51105 Köln

www.tuv.com





A QMS Certified Company



**Corporate Office: Hyderabad**

#202, URR Koneru Mansion, Plot No-193,  
Road No.2/2, Matrusri Nagar, Hafeezpet,  
Hyderabad 500049.

**MFG Unit - 1: Sadasivapet**

Survey #323, Konapur Village, Sadasivapet  
(M) Sangareddy (D), Telangana – 502291.

**MFG Unit - 2: Amaravati**

Near High Court, Sekhamuru - Nelapadu  
Road, Thullur, Andhra Pradesh, 522237.

# THANK YOU !!



LinkedIn



X (Twitter)



Instagram